

Directory Management

What are Novell eDirectory and Microsoft Active Directory?

Novell eDirectory and Microsoft Active Directory are Directory services which are used to manage key elements of a computer network; i.e. the place where IT administrators manage users, computers, network folders, email, printers etc.

What do we currently use Novell for?

Login/authentication to network resources; Network folders and shared drives; Access to shared printers and copiers; GroupWise email; Smart Phone Synchronization with GroupWise; Patch and Desktop Management.

Does the RIC support Novell eDirectory and Microsoft Active Directory?

Novell has been supported by the Regional Information Center for years. Active Directory became a new option in January of 2011. The MORIC will continue to support both solutions and both solutions remain viable options for the near future.

Why was Novell historically selected as the first Regional Standard?

- Novell was the market leader at the time
- It provided the full range of network services area districts needed
- It was less expensive than the technology of emerging competitors
- Novell support was robust and most software products were designed to work with Novell

Should we switch? Why would we migrate to Active Directory?

Districts do not need to migrate to Active Directory. The MORIC will continue to support both solutions. Districts should discuss their needs and long term goals with a MORIC Technical Contact in order to make an informed decision regarding the directory management solution options. Below is a listing of some of the factors that might encourage a district to consider migrating to Active Directory:

- Active Directory is the market leader
- Integration with Microsoft products (Windows, Office, SharePoint, Exchange, MSSQL)
- Integration and compatibility with 3rd party software (e.g. Virtual Desktops, Mobile Device Management)
- Better support for Apple products
- Ease and efficiency of management for technical staff
- Active Directory cost model has changed and the solution is now cost effective

How would migrating to Active Directory affect Email?

- Email would now run on MS Exchange and would be accessed through MS Outlook
- Better integration with mobile devices
- More complete web client

If we decide to migrate, will operations be disrupted?

- The migration would take place in stages over several months, but with minimal interruption for users. Major phases of the migration would be implemented over weekends and holiday vacations.

How would migrating impact our district financially?

- The vendors have different licensing models. A MORIC Technology Planning Specialist can provide your district with analysis related to expenses associated with the two solutions, as districts have a variety of options to select from and the fiscal impact will vary based on your districts' current environment and future needs.

Services



Users



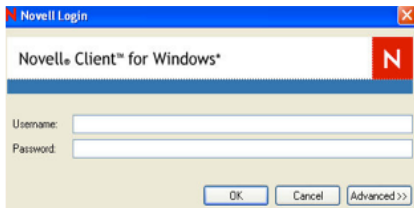
Files



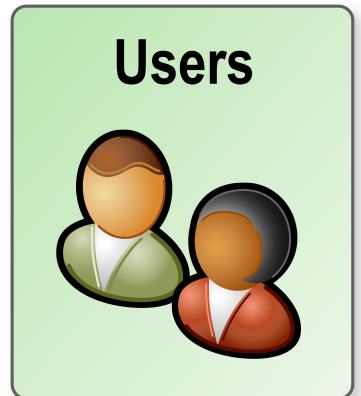
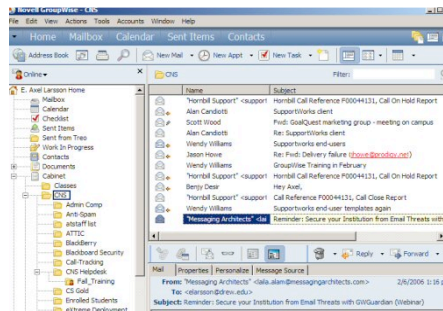
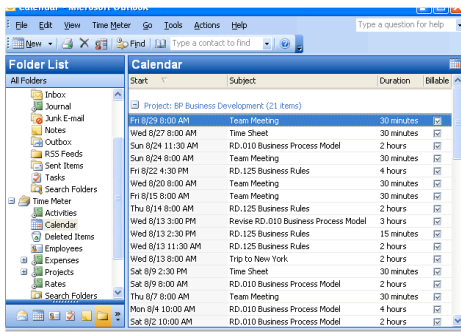
Directory Management

What differences would an end-user see?

New Login Screen



New E-mail Client



Sample District Migration Plan

Implementation Team

- Project Coordinator: Joe DiFabio
- Team: Scott Murray, John Gillette, Rich Feldmann, Dan Potter, and Dave Kahn

Active Directory Migration

- Clean Novell Network folders, Rights assignments, Organizational Structure, etc.
- Build Domain Controllers
 - Determine domain name (.local vs .org)
 - Setup redundant physical Domain Controllers (assure maximum uptime and failover)
 - Configure DNS
 - Setup AD Integrated Certificate Services (Optional process. Users considering implementing Sharepoint or Lync Topologies benefit from this step.)
- Create User Accounts and Management Structure (OU layout, Security groupings, etc.)
 - Determine management responsibilities (Who will administer what aspects of the new structure?)
 - Define password policies / management (e.g. expiration policies)
- Build File Server(s)
- Setup Backup Server
- Migrate Files (e.g. home folders, common folders, application folders, etc.)
 - Create Shares
 - Assign Rights
- Migrate Drive Mappings (e.g. Home Folders, Common Folders, FM2000, ClearTrack, etc.)
 - Establishing Policies
- Install Microsoft client on each Workstations, join them to the Domain and Perform Necessary Updates



Exchange Migration

- Clean Up Mailboxes (Delete old users, as licenses are billed per user)
- Migrate Data (i.e. Utilize migration tools to transfer inboxes from GroupWise to Exchange)
- Install the Client on Workstations
- SMARTPhones (configured on server and firewall end, as well as hit each end user device)
- Gwava/Archival (nothing noticed on the end-user level)

Training

- Implement Administrative Training (Tom Moats)
- Implement Exchange Training

Migration Timeline

- File Server
 - MORIC and MOBOCES (Weekend)
- Workstation Migration
 - MOBOCES Instructional Programs (Holiday Week)
 - MOBOCES Administration and RIC Administration (Weekend)
- Exchange Migration
 - MORIC (Weekend)
 - MOBOCES (Weekend)

